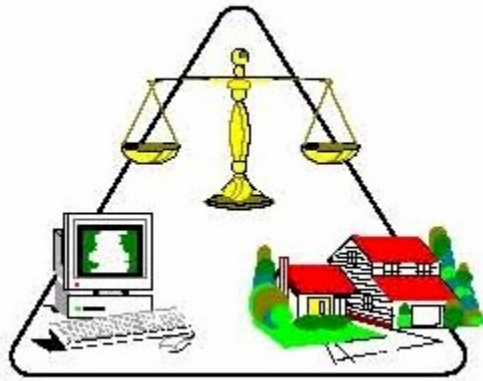


# Montgomery County Auditor



## Karl L. Keith

Historical Documents converted by

GIS Department

EXCEED CONVERSION DOCUMENTS (EX)

March 2008 History Map

DISCLAIMER:

Documents are to be used as public general information and is provided strictly as a courtesy. No warranty as to the content, accuracy or completeness of any information provided herein.

SEE PAGE 4 BOOK 49

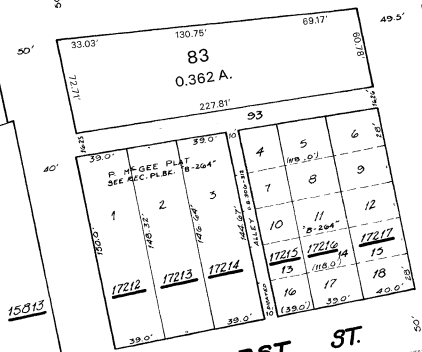
SEE PAGE 1A BOOK 49  
15436

2-M-53

OLD DAYTON HYDRAULIC CO. R/W LINE SEE ENDS FILE (4-3)

BLVD.

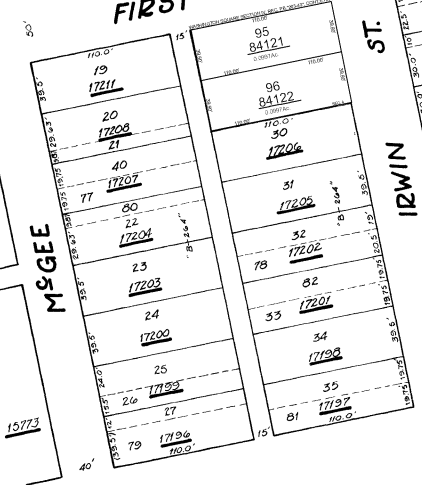
2-1-59 ORD. # 15194  
DEDICATED 4-20-59 D.W. # 11133



FIRST ST.

SEE PAGE 3 BOOK 46

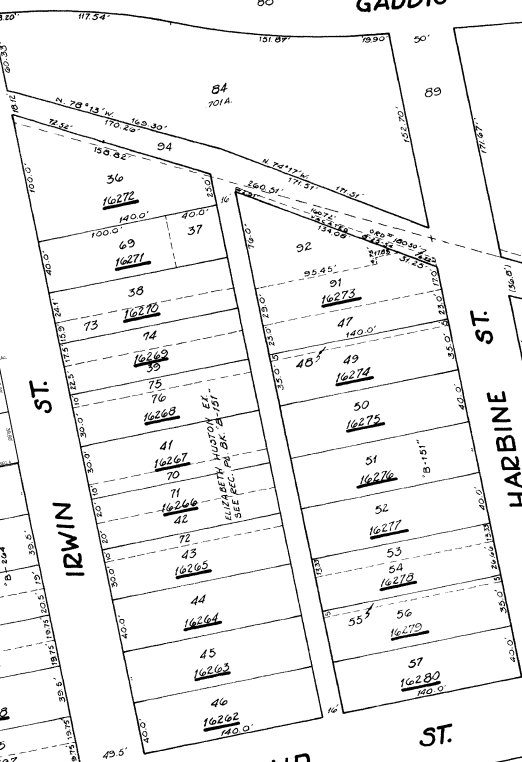
MSGEE



IZWIN ST.

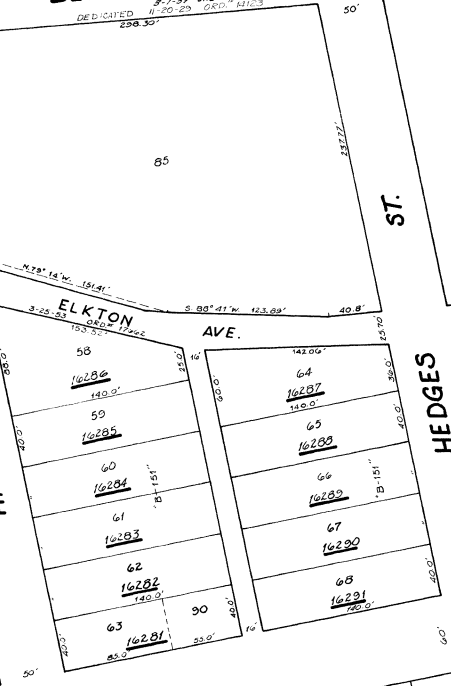
SECOND ST.

SEE PAGE 2 BOOK 47



HARBINE ST.

ELKTON AVE.



ST.

HEDGES

SEE PAGE 4 BOOK 47

SCALE: 1" = 50'

DAYTON 47-1