

10077 S.R.13 (Jacksonstown Rd.), Thornville, Ohio 43076
Route 13 Commerce Park
 ALTA/ACSM LAND TITLE SURVEY
 OF 2 CONTIGUOUS PARCELS
 TRACT 1: 28.970 ACRES/1,261,933 Sq. Ft. TRACT
 TRACT 2: 2.158 ACRES/94,002 Sq. Ft. TRACT



2
2

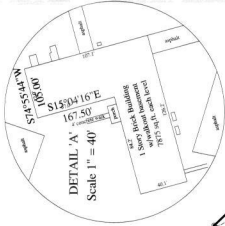
PREPARED BY THE ENGINEER FOR LICENSED ENGINEERS, SURVEYORS, AND ARCHITECTS, AND BEING A PART OF SECTION 5 & 6 PART OF SECTION 14, TOWNSHIP 10N, RANGE 17W, OF THE REFUGELANDS.

TRACT 1: being all of AUDITORS PPN 41-120090-00.000
 TRACT 2: being all of AUDITORS PPN 41-120402-00.000

NOTE

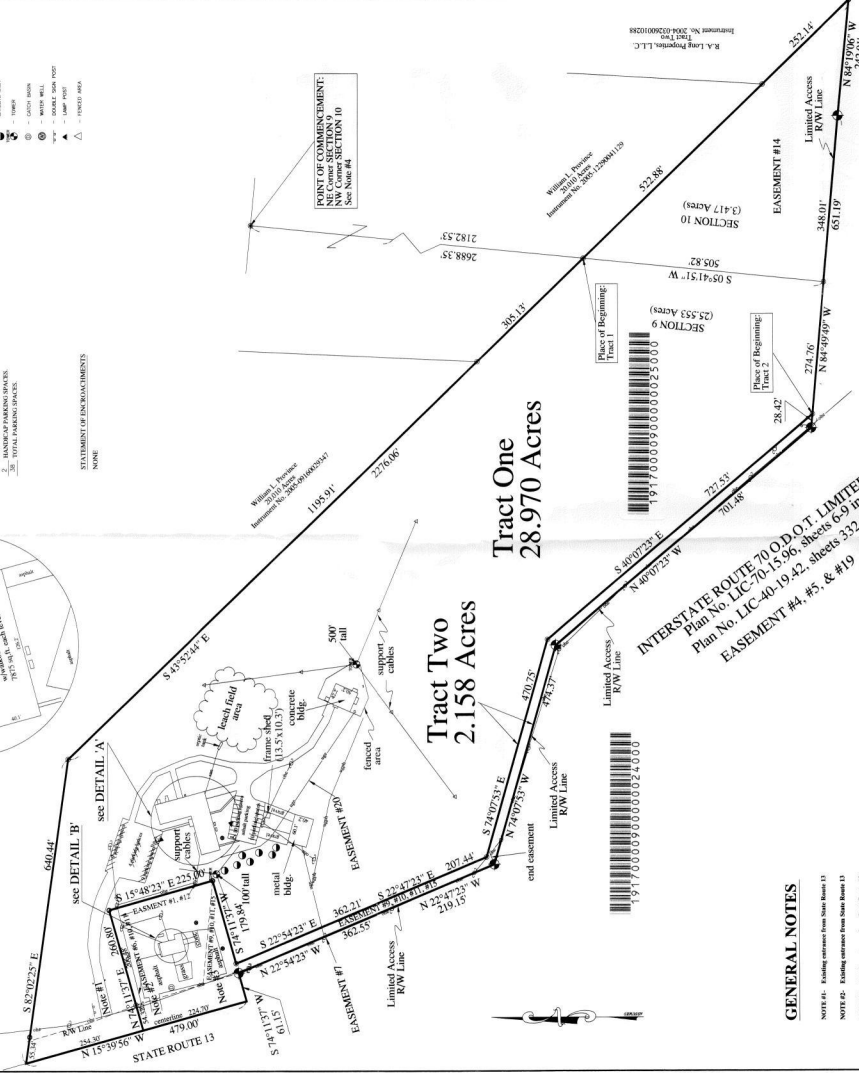
THIS SURVEY CONFORMS WITH THE SURVEYING ACTS AND RULES IN THE MOST RECENT EDITIONS THEREOF. THE MEASUREMENTS, VALUES, MANIPULATIONS AND INLETS, THE ACTUAL LOCATION OF UNDERGROUND UTILITIES, AND THE LOCATION OF THE PROPERTY OWNER OF THESE LINES PREVENTS THIS DRAWING FROM PROVIDING GRAPHICAL REPRESENTATION. S.A. ENGLAND & ASSOCIATES ASSUMES NO LIABILITY FOR THE ACCURACY OF THESE LOCATIONS.

- THIS SURVEY CONSTATS:
- 1. BEING A PART OF SECTION 5 & 6 PART OF SECTION 14, TOWNSHIP 10N, RANGE 17W, OF THE REFUGELANDS.
 - 2. BEING TOTAL PARCEL PARCELS.



- LEGEND**
- - 10' TO 20' VERTICAL CURVE
 - - 20' TO 30' VERTICAL CURVE
 - - 30' TO 40' VERTICAL CURVE
 - - 40' TO 50' VERTICAL CURVE
 - - 50' TO 60' VERTICAL CURVE
 - - 60' TO 70' VERTICAL CURVE
 - - 70' TO 80' VERTICAL CURVE
 - - 80' TO 90' VERTICAL CURVE
 - - 90' TO 100' VERTICAL CURVE
 - - 100' TO 110' VERTICAL CURVE
 - - 110' TO 120' VERTICAL CURVE
 - - 120' TO 130' VERTICAL CURVE
 - - 130' TO 140' VERTICAL CURVE
 - - 140' TO 150' VERTICAL CURVE
 - - 150' TO 160' VERTICAL CURVE
 - - 160' TO 170' VERTICAL CURVE
 - - 170' TO 180' VERTICAL CURVE
 - - 180' TO 190' VERTICAL CURVE
 - - 190' TO 200' VERTICAL CURVE
 - - 200' TO 210' VERTICAL CURVE
 - - 210' TO 220' VERTICAL CURVE
 - - 220' TO 230' VERTICAL CURVE
 - - 230' TO 240' VERTICAL CURVE
 - - 240' TO 250' VERTICAL CURVE
 - - 250' TO 260' VERTICAL CURVE
 - - 260' TO 270' VERTICAL CURVE
 - - 270' TO 280' VERTICAL CURVE
 - - 280' TO 290' VERTICAL CURVE
 - - 290' TO 300' VERTICAL CURVE
 - - 300' TO 310' VERTICAL CURVE
 - - 310' TO 320' VERTICAL CURVE
 - - 320' TO 330' VERTICAL CURVE
 - - 330' TO 340' VERTICAL CURVE
 - - 340' TO 350' VERTICAL CURVE
 - - 350' TO 360' VERTICAL CURVE
 - - 360' TO 370' VERTICAL CURVE
 - - 370' TO 380' VERTICAL CURVE
 - - 380' TO 390' VERTICAL CURVE
 - - 390' TO 400' VERTICAL CURVE
 - - 400' TO 410' VERTICAL CURVE
 - - 410' TO 420' VERTICAL CURVE
 - - 420' TO 430' VERTICAL CURVE
 - - 430' TO 440' VERTICAL CURVE
 - - 440' TO 450' VERTICAL CURVE
 - - 450' TO 460' VERTICAL CURVE
 - - 460' TO 470' VERTICAL CURVE
 - - 470' TO 480' VERTICAL CURVE
 - - 480' TO 490' VERTICAL CURVE
 - - 490' TO 500' VERTICAL CURVE
 - - 500' TO 510' VERTICAL CURVE
 - - 510' TO 520' VERTICAL CURVE
 - - 520' TO 530' VERTICAL CURVE
 - - 530' TO 540' VERTICAL CURVE
 - - 540' TO 550' VERTICAL CURVE
 - - 550' TO 560' VERTICAL CURVE
 - - 560' TO 570' VERTICAL CURVE
 - - 570' TO 580' VERTICAL CURVE
 - - 580' TO 590' VERTICAL CURVE
 - - 590' TO 600' VERTICAL CURVE
 - - 600' TO 610' VERTICAL CURVE
 - - 610' TO 620' VERTICAL CURVE
 - - 620' TO 630' VERTICAL CURVE
 - - 630' TO 640' VERTICAL CURVE
 - - 640' TO 650' VERTICAL CURVE
 - - 650' TO 660' VERTICAL CURVE
 - - 660' TO 670' VERTICAL CURVE
 - - 670' TO 680' VERTICAL CURVE
 - - 680' TO 690' VERTICAL CURVE
 - - 690' TO 700' VERTICAL CURVE
 - - 700' TO 710' VERTICAL CURVE
 - - 710' TO 720' VERTICAL CURVE
 - - 720' TO 730' VERTICAL CURVE
 - - 730' TO 740' VERTICAL CURVE
 - - 740' TO 750' VERTICAL CURVE
 - - 750' TO 760' VERTICAL CURVE
 - - 760' TO 770' VERTICAL CURVE
 - - 770' TO 780' VERTICAL CURVE
 - - 780' TO 790' VERTICAL CURVE
 - - 790' TO 800' VERTICAL CURVE
 - - 800' TO 810' VERTICAL CURVE
 - - 810' TO 820' VERTICAL CURVE
 - - 820' TO 830' VERTICAL CURVE
 - - 830' TO 840' VERTICAL CURVE
 - - 840' TO 850' VERTICAL CURVE
 - - 850' TO 860' VERTICAL CURVE
 - - 860' TO 870' VERTICAL CURVE
 - - 870' TO 880' VERTICAL CURVE
 - - 880' TO 890' VERTICAL CURVE
 - - 890' TO 900' VERTICAL CURVE
 - - 900' TO 910' VERTICAL CURVE
 - - 910' TO 920' VERTICAL CURVE
 - - 920' TO 930' VERTICAL CURVE
 - - 930' TO 940' VERTICAL CURVE
 - - 940' TO 950' VERTICAL CURVE
 - - 950' TO 960' VERTICAL CURVE
 - - 960' TO 970' VERTICAL CURVE
 - - 970' TO 980' VERTICAL CURVE
 - - 980' TO 990' VERTICAL CURVE
 - - 990' TO 1000' VERTICAL CURVE

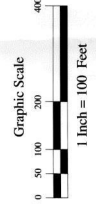
STATEMENT OF ENCUMBRANCES
 NONE



GENERAL NOTES

- NOTE #1 - Existing easement from State Route 13
- NOTE #2 - Existing easement from State Route 13
- NOTE #3 - Existing easement from State Route 13
- NOTE #4 - 2" non-legal based dimensions, see 2nd page plan.

PREPARED BY:
 S.A. ENGLAND & ASSOCIATES
 10000 STATE ROUTE 13
 JACKSONSTOWN, OHIO 43076
 HANCOCKVILLE, OHIO 43030
 740.565.0000 FAX: 740.565.0000 INTERNET:



DETAIL 'B'
 Scale 1" = 40'
 1 Story Block Building
 1580 sq.ft.



INTERSTATE ROUTE 70 O.D.O.T. LIMITED ACCESS R/W
 Plan No. LIC-70-15.96, sheets 6-9 inclusive
 Plan No. LIC-40-19.42, sheets 332 & 333.
 EASEMENT #4, #5, & #19



PROJECT NAME:
 Route 13 Commerce Park

DATE: 08/11/2011

SCALE: 1" = 40'

PROJECT NO: 1016

DATE: 08/11/2011

PROJECT NO: 1016

DATE: 08/11/2011

PROJECT NO: 1016