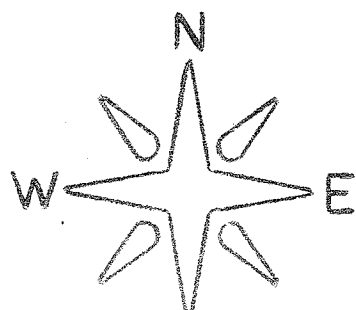
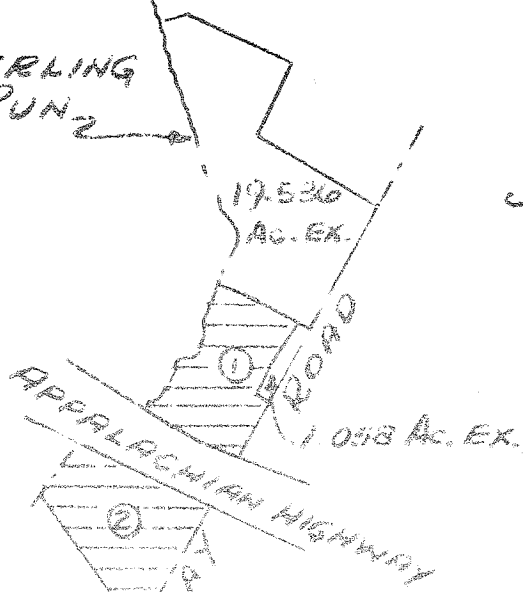


STERLING RUN

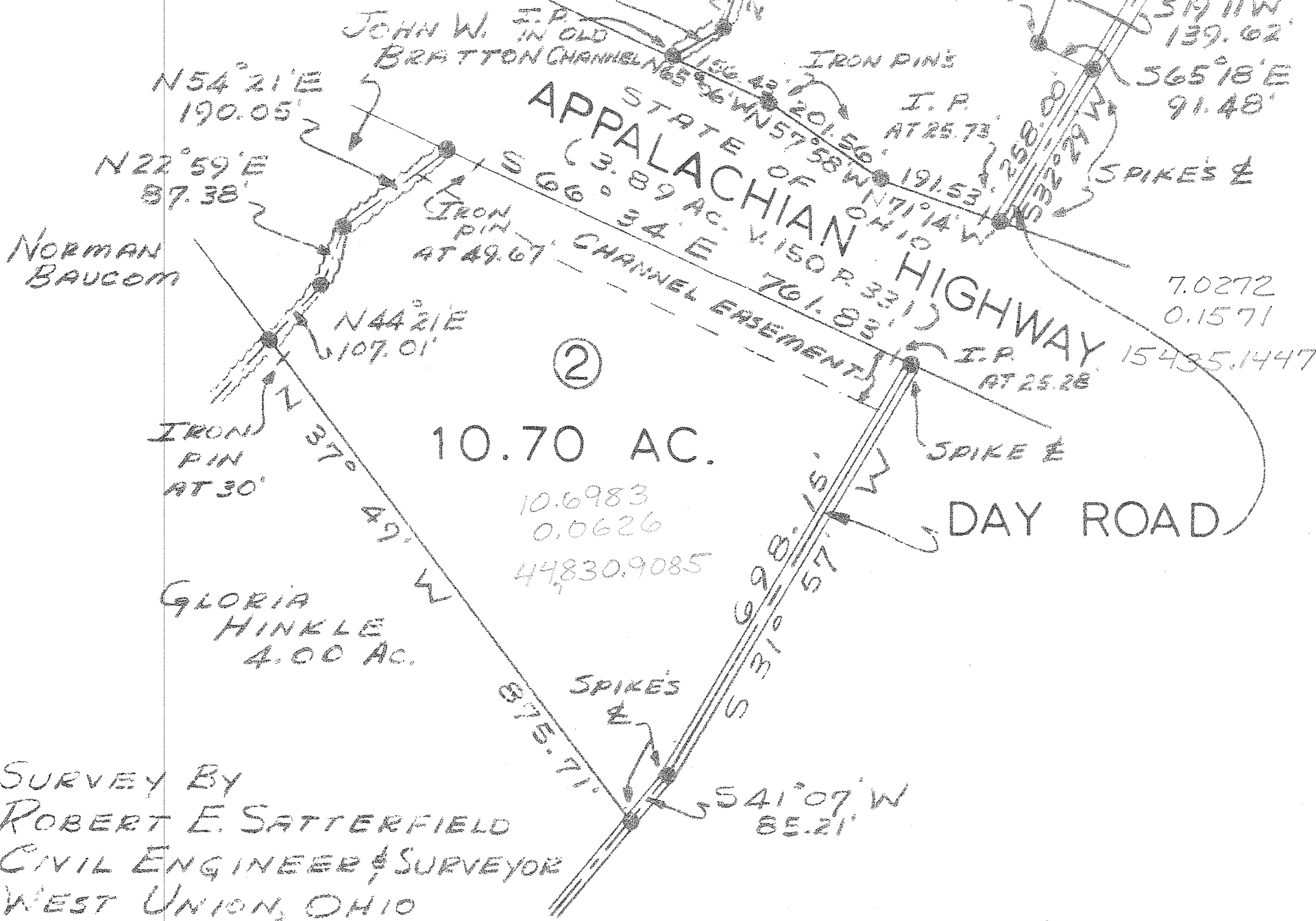
STERLING RUN



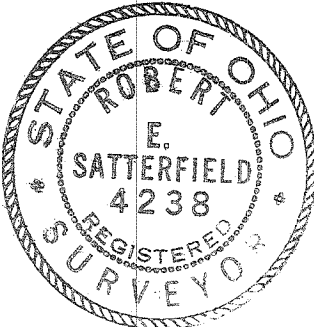
JOHN W. BRATTON
22.32 AC.



VICINITY SKETCH
1" = 1000'
ORIG. 42.77 AC.
V. 144 P. 69



SURVEY BY
ROBERT E. SATTERFIELD
CIVIL ENGINEER & SURVEYOR
WEST UNION, OHIO



SURVEY FOR
ELM ENTERPRISES, INC.

MILITARY SURVEY NO. 11081
GREEN TOWNSHIP
BROWN COUNTY, OHIO
SCALE 1" = 200' JANUARY, 1978

27-109-548