

WELL EQUIPPED ROOFING CONTRACTOR - COMPLETE LIQUIDATION - BUSINESS CLOSED

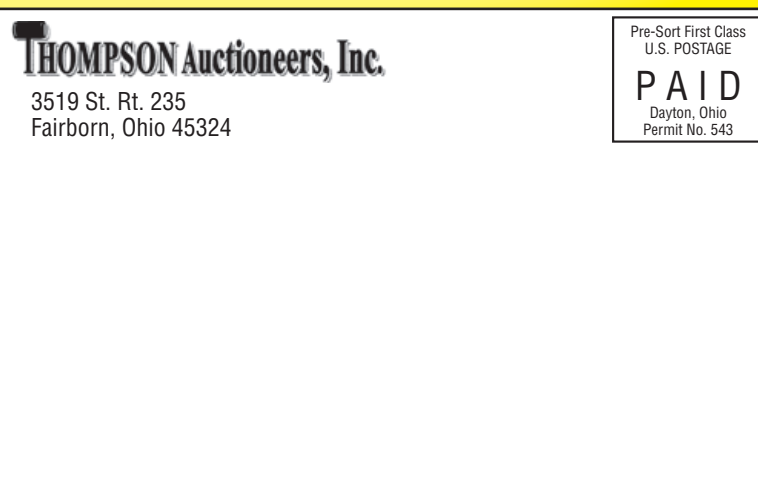
PUBLIC AUCTION

By Order of Secured Creditor

T&F SYSTEMS, INC.
 1599 E. 40th Street • Cleveland, Ohio
 Thursday, June 16 • 9:00 a.m.



Sterling/Terex Crane Truck



PUBLIC AUCTION

T&F SYSTEMS, INC.

1599 E. 40th Street • Cleveland, Ohio

THURSDAY, JUNE 16 • 9:00 A.M.

Inspection: Wednesday, June 15 • 9:00 a.m. - 4:00 p.m.

FEATURING:

Sterling/Terex Crane Truck • Ford Semi Tractor • Dump Trailers
 Drop Deck Trailer • Fork Lifts • Pick Up Trucks • Miscellaneous Trailers
 Mustang Skid Steer • Tar Kettles • Tear Off Machines • Roofing Items
 Roofing Materials, Adhesives, Supplies, Etc.
 Roll Former Model VS-150 Roof Panel Former • Cellufoam Machine
 Welders • Generators • Niagara 10' X 14 Gauge Power Squaring Shear
 Turn-N-Bend 10' Power Brake • Tennsmith Brakes
 Miscellaneous Sheet Metal Machinery
 Sheet Metal and Stainless Stock, Large Quantity
 Huge Quantity Power Tools and Support Items
*Real Estate Offered at Approx. 1:00 PM,
 Subject to Confirmation of Secured Lender*



THOMPSON Auctioneers, Inc.

Steve Thompson, Auctioneer • Ohio License #63199566109937
 426-8446 • thompsonauctioneers.com



2011 Chevrolet Silverado
 Pick Up Truck

**WELL-EQUIPPED
 ROOFING CONTRACTOR
 COMPLETE LIQUIDATION
 BUSINESS CLOSED**



Niagara 10' X 14 Gauge Power Shear

BUSINESS CLOSED - WELL EQUIPPED ROOFING CONTRACTOR - COMPLETE LIQUIDATION

PUBLIC AUCTION

By Order of Secured Creditor

T&F SYSTEMS, INC.
 1599 E. 40th Street • Cleveland, Ohio

THURSDAY, JUNE 16 • 9:00 A.M.

Inspection: Wednesday, June 15 • 9:00 a.m. - 4:00 p.m.

**WELL-EQUIPPED
 ROOFING CONTRACTOR
 COMPLETE LIQUIDATION
 BUSINESS CLOSED**

FEATURING:

Sterling/Terex Crane Truck • Ford Semi Tractor • Dump Trailers • Drop Deck Trailer • Fork Lifts • Pick Up Trucks
 Miscellaneous Trailers • Mustang Skid Steer • Tar Kettles • Tear Off Machines • Roofing Items
 Roofing Materials, Adhesives, Supplies, Etc. • Roll Former Model VS-150 Roof Panel Former
 Cellufoam Machine • Welders • Generators • Niagara 10' X 14 Gauge Power Squaring Shear
 Turn-N-Bend 10' Power Brake • Tennsmith Brakes • Miscellaneous Sheet Metal Machinery
 Sheet Metal and Stainless Stock, Large Quantity • Huge Quantity Power Tools and Support Items
Real Estate Offered at Approx. 1 PM, Subject to Confirmation of Secured Lender



2013 Dodge Ram Pick Up Truck



Turn-N-Bend Sheet Metal Brake

DIRECTIONS: From I-90 on East Side of Downtown Cleveland, Take Exit 173C, Superior Ave. Go East on Superior Ave.
 1/2 Mile to E. 40th St. Turn Right onto E. 40th St., Auction Site 2/10 Mile on Left Hand Side, 1599 E. 40th St. Watch for Signs!

TERMS: Everything sells on an "As is, where is, in place basis, with all defects whether apparent or not. There are NO warranties or guarantees of any kind.
 It is the buyer's responsibility to inspect before bidding. Everything must be paid for in full the day of the auction with cash, check with proper ID, Visa, MC or Discover.
 There is a 12% buyer's Premium in effect for this auction. If you use a credit card there is a 15% buyers premium.

BID-SPOTTER TERMS: BIDSPOTTER PARTICIPANTS MUST PRE-REGISTER 24 HOURS PRIOR TO START OF AUCTION. A 15% Buyer's Premium is in effect if you bid through bidspotter.com, and pay with cash, wire transfer, or check. An 18% Buyer's Premium is in effect if you bid through bidspotter.com, and pay with credit card. Terms of on-site buyers apply to bidspotter bidders. IF YOU CANNOT ATTEND OR BID ONLINE: Fax the items you want to bid on with your max price. We will bid on your behalf. Include a credit card number for downpayment in the event you are the successful bidder. Fax # (937) 878-6161



DIRECT CAPITAL

For pre-approval financing options, call
 Casey Goodell, Direct Capital, at 603-766-9365.

THOMPSON Auctioneers, Inc.

Steve Thompson, Auctioneer • www.thompsonauctioneers.com
 937-426-8446 • Ohio License #63199566109



PUBLIC AUCTION



Transcraft Semi Trailer

CRANE TRUCK

- **Sterling** Crane Truck, New 2000, VIN 2FZXB1CB4YAG78400, 142,876 Miles, Diesel, with Terex Model BT4792 Crane, s/n 49004001034, 23.5 Ton Capacity, 92 Ft. Fully Synchronous Telescopic Boom, Quick Reaving Boom Head, Electronic Capacity Indicator, Outriggers

SEMI TRACTOR

- **Ford** Model LTL 9000 Max Semi Tractor, Aero Max Engine, VIN 1FTZA95X0RVA22921, 335,823 Miles, Day Cab

PICK UP TRUCKS

- 2013 **Dodge** Ram 1500 Pick Up Truck, VIN 3C6JR6DG5DG588376, 135,253 Miles, Gas, 8' Bed, Ladder Rack, Air, Cruise
- 2011 **Chevrolet** 2500HD Silverado Pick Up Truck, Duramax Diesel, 4 X 4, VIN 1GC2KYC80VZ408869, Crew Cab, Ladder Rack, 6' Bed, 123,000 Miles

CARGO VAN

- 2008 **Chevrolet** Express Cargo Van, 187,622 Miles, Ladder Rack

SINGLE DROP SEMI TRAILER

- **Transcraft** Model DTX18-43 Single Drop Trailer, s/n TC-3996, 60,000 GVWR, 43' Bed, Dual Axle

MISCELLANEOUS TRAILERS

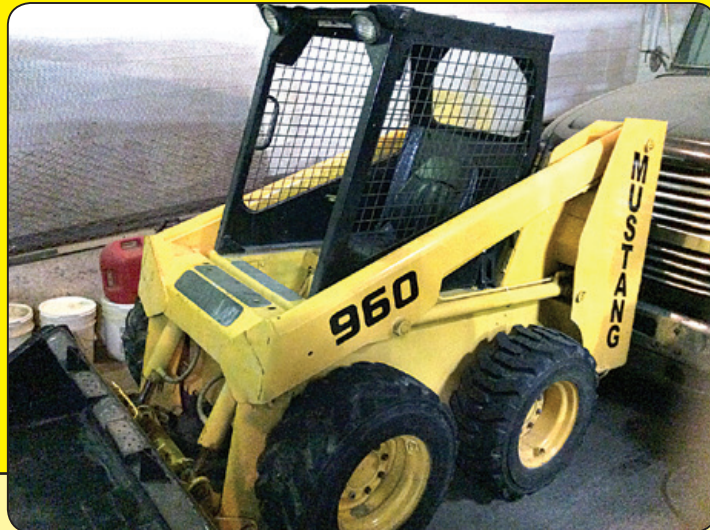
- (2) **Freuhauf** Aluminum Dump Trailers
- (2) Bulker Type Tank Trailers
- (4) 48' Box Trailers
- 2003 **Spar** Model DT120 Tandem Axle Dump Trailer, 5,400 LB. GVWR
- 2003 **Spar** Model DT120 Tandem Axle Trailer, s/n 004, 10,000 Lb. GVWR
- **Bobcat** Tandem Axle Equipment Trailer

SKID STEER

- **Mustang** Model 960 Skid Steer, 5,587 Hours, with Bucket and Fork Attachment, s/n 120-32824

FORK LIFTS

- **Yale** Model 050TFNUE084 Fork Lift, s/n E177B160206, 4,000 Lb. Capacity, LP, Hard Tire, 8,951 Hours, 3-Stage Mast, Cage
- **Clark** Model GPX25E Fork Lift, 3,700 Lb. Capacity, LP, Hard Tire, Cage, 3-Stage Mast, 5,587 Hours



Mustang Skid Steer

ROOFING EQUIPMENT

- (7) **Garlock** 36" Gas Powered Work Horses, with Dump Hoppers
- (8) **Garlock** 36" Gas Powered Work Horses
- **Garlock** Model 600 Work Horse with Dump Hopper
- **Garlock** Power Wagon
- (3) **Garlock** Super Saws, 8 HP Gas Engine
- (4) **Garlock** 10 HP Roof Cutters
- (8) **Garlock** Small Capacity Tar Kettles
- (3) **Garlock** 1 Ply Gravelers
- (4) **Garlock** Tractors with Neiman Power Roof Removers
- (3) **Garlock** Power Roof Cutters
- **Garlock** Hydraulic Swing Hoist, 18 HP
- **Gravely** Tractor with Roof Remover and Broom Attachment
- **Gravely** Tractor with Neiman Power Roof Cutter
- (2) **Neiman** Power Roof Removers
- **Reeves** Power Spud Machine
- **Gravely** Power Broom Attachment
- (2) **Strong Deck Mate** Model D-2-C Portable Deck Roof Mixing and Pumping System
- **AM** Roof System Master Heater
- Plastic Trash Carts, Roof Buggys, Drywall Carts, Carry Carts, Miscellaneous Roofing Items

TRAILERS: TAR KETTLE, FOAM MACHINE & HOT WATER

- (5) **Garlock** 800 Gallon Stretch Tar Kettles, Mounted on Tandem Axle Trailers
- **Garlock** 900 Gallon Tar Kettle, Mounted on Tandem Axle Trailer
- **Reeves** 750 LP Tar Kettle, Mounted on Tandem Axle Trailer
- Miscellaneous Additional Tar Kettles
- **Cellufoam** Model 24-035G Foam Machine, Mounted on Tandem Axle Trailer
- Hot Water Tank, Mounted on Tandem Axle Trailer

PORTABLE AIR COMPRESSOR

- **Sullair** Model D-185 QV Portable Air Compressor, 185 CFM, Mounted on Tandem Axle Trailer



Lincoln Tig 185 Welder



Freuhauf Dump Trailer (1 of 2)



Spar Trailer (Several Available)



Tar Kettle



Bank View of Tar Kettle



Tar Kettle

MULTI PROFILE ROOFING MACHINE

- **Roll Former** Model VS-150 Multi Profile Roofing Machine, 1" and 1 1/2" Profiles, Hydraulic Drive and Shear, 9"-24" Adjustable Panel Width, 22 Ga.-26 Ga. Steel Capacity, .032" Aluminum Capacity, 12-20 Oz. Copper Capacity

SHEET METAL MACHINERY & EQUIPMENT

- **Niagara** Model 410-B Power Squaring Shear, s/n 52001, 10' X 14 Gauge Capacity, 10' Squaring Arm, Manual Back Gage
- **Turn-N-Bend** Model V40 Roto-Die Style Brake/Folder, s/n 749, 10' X 14 Gauge Capacity
- **Tennsmith** Model HB12116 Leaf Brake, s/n 17872, 12' X 16 Gauge Capacity
- **Tennsmith** Model U48 Box and Pan Brake, s/n 13456, 48" X 16 Gauge Capacity
- **Van Mark II** Trimmer Model TM106 Siding Brake, 10'
- **Flagler** 22 Gauge Roll Former, s/n 5293-1286
- **Rotex** Model 18 Rotary Punch, s/n 12194, with Punches and Dies
- Blacksmith Stand with Miscellaneous Anvils
- **Niagara** and **Pexto** Rotary Machines, Universal Machines, Crimpers, Etc.

WELDERS & GENERATORS

- **Lincoln** Precision Tig 185 Tig Welder, s/n U1040411890
- (2) **Lincoln** Precision Power Mig 140C Portable Mig Welders
- **Miller** 200 DC Arc Welder, s/n JJ328133

REAL ESTATE OFFERED AT APPROX. 1 PM, DAY OF AUCTION

Offered at Auction Site, 1599 E. 40th St., Cleveland, Ohio

Note: Real Estate Offered Subject to Confirmation of Secured Lender

- Property Zoned SI-C3 Semi-Industrial District. Current Parcel #104-27-043.
- Property Size .58 Acres, Building Size 18,284 Sq. Ft. (Shop and Office),
- Current Semi Annual Taxes \$2,858.67
- Terms of Real Estate Auction: All Real Estate Bidders must bring to the Auction a Certified Check for \$20,000.00, payable to "Ohio Real Estate Auctions". The Real Estate sells on an "As Is, In Place with All Defects whether Apparent or Not" Basis. The Property Sells with No Contingencies such as Financing or Inspections. Potential Buyers may conduct inspections at their own cost prior to the Auction, however, the Property sells with No Contingencies. PROPERTY SELLS SUBJECT TO CONFIRMATION OF THE SECURED LENDER. There is an 8% Buyers' Premium that will be added to the final bid price to determine the selling price.



THOMPSON Auctioneers, Inc.

Thinking of an Auction? Need an Appraisal? Know of a Plant Closure?

Call Bryan Harvey, 937-609-6354 or Steve Thompson, 937-426-8446 • www.thompsonauctioneers.com